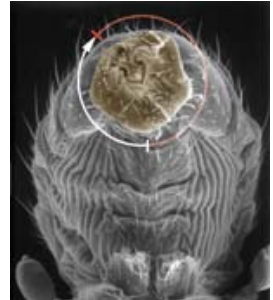


POST-DOC and PhD positions available

Left-right asymmetry in *Drosophila*

A postdoctoral and a PhD research position are available to study L/R asymmetry in *Drosophila* in the group of Dr. Stéphane NOSELLI at the University of Nice/CNRS (Institute of Developmental Biology & Cancer, UMR6543), Nice France (<http://www.unice.fr/ibdc/>).



The research project will focus on the genetics and molecular basis of L/R asymmetry establishment in *Drosophila*. Our previous work identified the first L/R determinant in flies, Myosin ID, shown to be essential for L/R axis orientation. We have recently performed several genetic screens and have been able to identify new loci that are involved in setting the L/R axis in association with MyoID. The project will deal with the characterization of candidate genes using genetics, molecular cell biology and time-lapse analysis of organ looping.

We are seeking highly talented and self-motivated collaborators. The successful candidates will have a strong background in genetics and molecular cellular biology using the *Drosophila* system. The working language in the laboratory is English. The positions are available as of now with a negotiable starting date. The initial appointment will be made for one year, with a possible extension to up to three years.

To apply, please send a CV, short motivation letter and 2-3 academic references to noselli@unice.fr

Stéphane NOSELLI

Institut Biologie du Développement & Cancer IBDC-Nice
UMR 6543 - CNRS , Univ. Nice Sophia-Antipolis

tel: +33 (0) 4 92 07 64 33 (direct)

Fax: +33 (0) 4 92 07 64 03

<http://www.unice.fr/isdbc/>

<http://www.unice.fr/biochimie/umr6543/SNlabPage/noselli.htm>